



# Petroleum Solutions

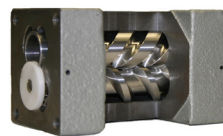
For Fuel Handling & Service Station Equipment

*As environmental regulations change, Petroleum marketers are faced with a new set of expectations. PSI is committed to keep you up-to-date and in compliance by helping you manage your sites in an effort to reduce energy consumption. So you can protect your assets, as well as the environment.*

## Greener ways to manage your world.

### Veeder-Root TLS-450

The TLS-450 provides one-touch on-site compliance reporting with an automated process and electronic reports, which makes reporting more efficient and accurate. This eliminates the manual process of printing paper reports, which are costly and can lead to errors. The TLS-450 offers a variety of options for access, control, data storage and business management. So you can tailor your system to fit the unique requirements of your operation.



### Gilbarco® Ecometer™

Conventional meters cost high volume retailers more than 3,000 gallons annually in lost fuel, which adds up to thousands of dollars in lost profits. The Ecometer axial flow meter, is the industries only field-proven advanced meter technology that helps eliminate fuel loss.

- No touching parts means minimal wear and minimal meter drift means reduced fuel losses & fewer re-calibrations.
- Low pressure loss and smooth, linear flow across the meter means higher flow rates and eliminates “pulse bunching” leading also to more accurate metering.
- Less than half of the leak points of a 4-piston meter, no possible friction leak points means very low chance of leakage.
- Electronic calibration enables simpler and quicker servicing.

### Gilbarco® Wisdom™ Intelligent Device Management (IDM)

This unique, integrated management system keeps you from having to piece together information from different sources in order to manage your business. Monitor and control your dispensers, automatic tank gauge readings, coolers, air conditioning, store traffic, and more, at a glance from anywhere. They're all summarized on a single dashboard screen that's easy to use. Manage one store or many, on your own or through Gilbarco, with better and faster information that brings improved profitability for your entire operation.



**Increase uptime and efficiency** with comprehensive management systems that keep you in control.



**Improve energy management** by carefully controlling power usage such as lighting as well as temperatures.



**Reduce operational costs** by protecting your inventory and avoiding unnecessary losses.



**Improve compliance** with automatic monitoring and instant reporting to keep up with department guidelines.



**Become a green operator** by reducing your carbon footprint through careful management of energy consumption.



Fuel Dispensers



Lighting



Air Conditioning



Refrigeration



Power Usage



Save Money

**A Comprehensive System for Fuel, Power and Fixture Management**



# Petroleum Solutions

For Fuel Handling & Service Station Equipment

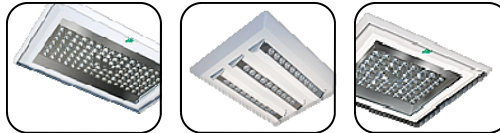


## The Lighting Manager - 5CB

The Square D IPaCS Lighting Manager-5CB product provides complete automatic operation of exterior and interior lighting in a single integrated space-saving system, designed to save energy, reduce electrical costs, and maximize the efficient operation of lighting loads in the facility.

The Lighting Manager-5CB is a U.L. Listed, automatic lighting control system that replaces unreliable time-clocks, photocells, and manual controls with a single box solution that integrates ambient light sensing, digital controls, and power switching of lighting circuits.

## Crossover™ Canopy Lighting



Lighting accounts for 40% of the utility costs of a facility. LED lighting reduces operation costs, improves operation functionality and saves energy—giving you an immediate return on your investment.

The Crossover™ is an affordable solid-state canopy lighting solution specifically designed for Petroleum and Convenience Store retail markets. The Crossover Ambient and Focus luminaires feature high performance LED optical systems designed to deliver exceptional lighting performance, with full cutoff, while using considerably less energy than traditional metal halide fixtures.



- 60-85% reduction in energy costs
- 60,000+ hours of expected life
- Dramatically improved light levels
- Virtually no maintenance
- Mercury free
- Also available for retrofit

## Other Environmentally “Green” Solutions

PSI is focused on offering a variety of “Green” solutions to help you not only reduce energy consumption but also reduce environmental impact.

- Flexible Fuel Dispensers
- Ethanol Filter Replacements
- Natural Spill Kits & Absorbents
- Vapor Recovery Systems
- DEF Fluid Pumps
- Environmental Consulting Services

For more information on products or services in your area, call one of our 7 PSI locations or visit us online at [www.petroleumsolutionsinc.com](http://www.petroleumsolutionsinc.com).

### Corporate Office McAllen

3109 N. McColl Road  
McAllen TX 78501  
(956) 686-9582  
(956) 686-0070 fax

### Corpus Christi

125 Airport  
Corpus Christi, TX 78405  
(361) 882-3077  
(361) 882-4811 fax

### Victoria

2706 Delmar  
Victoria, TX 77901  
(361) 573-7449  
(361) 573-2830 fax

### Houston

2700 Aldine Bender  
Houston, TX 77032  
(281) 449-4027  
(866) 449-4094 fax

### San Antonio

11111 Iota  
San Antonio, TX 78217  
(210) 661-2489  
(210) 661-7904 fax

### Austin

1804 Smith Rd.  
Austin, TX 78721  
(512) 278-1000  
(512) 278-1006 fax

### DFW Metroplex

1362 W. North Carrier Pkwy  
Grand Prairie, TX 75050  
(972) 314-2400  
(972) 314-2405 fax