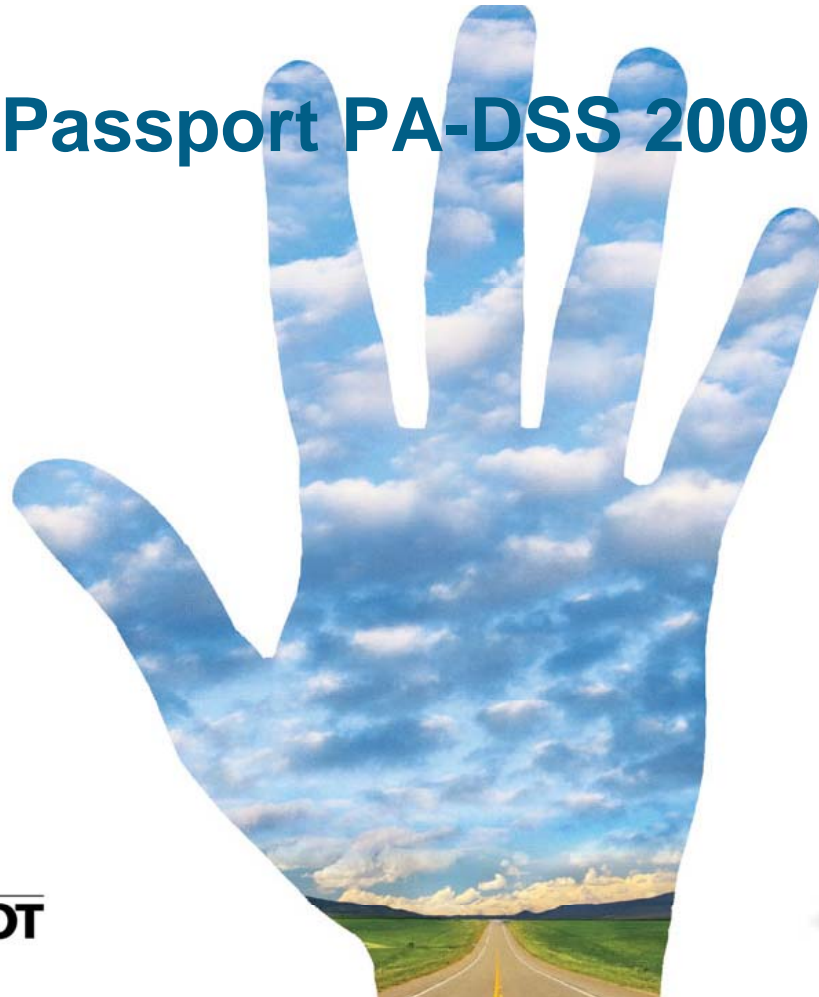


A new way to manage your world.

Passport[®]

Passport PA-DSS 2009



Objectives

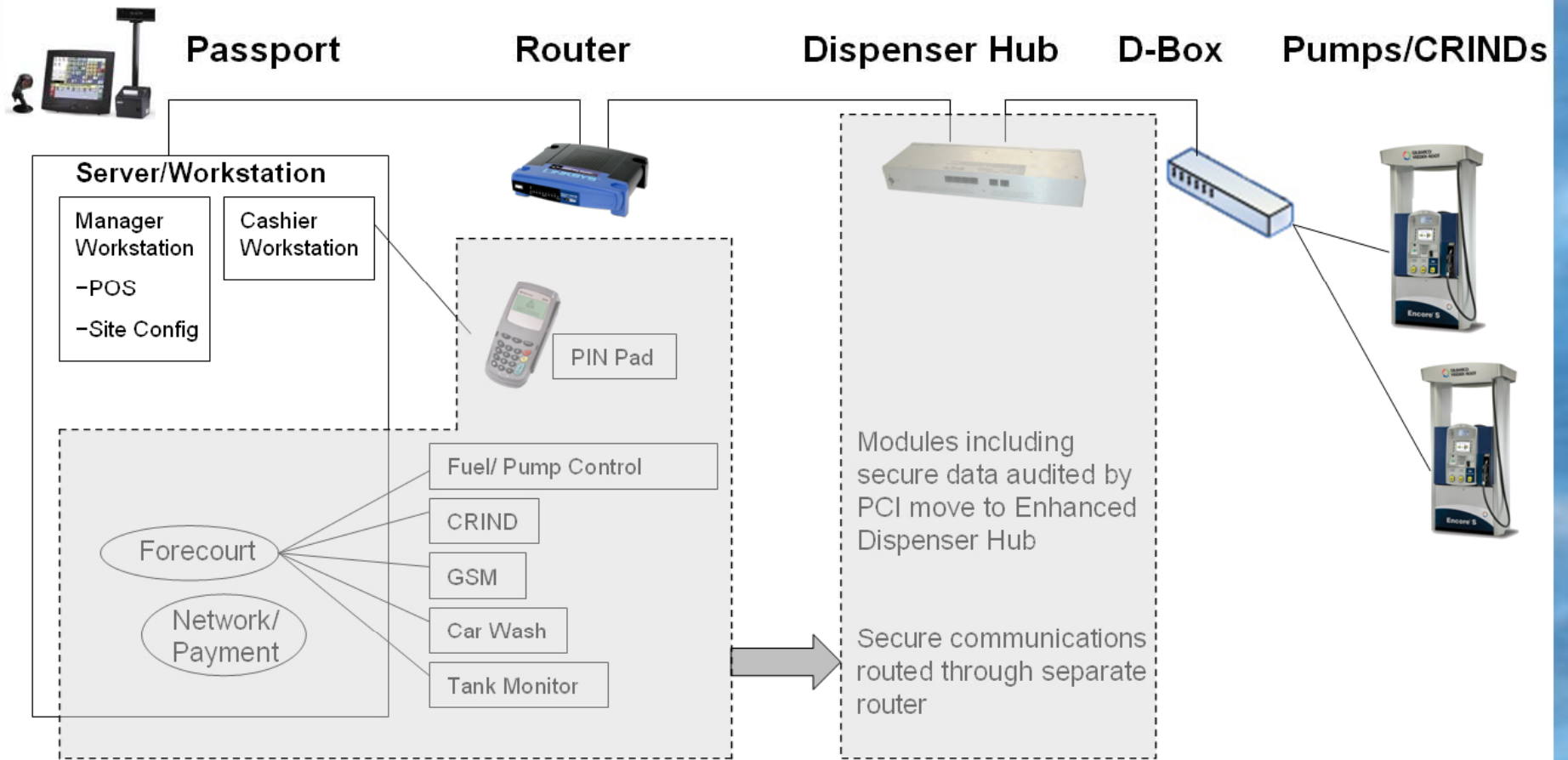
- **Make the changes needed to attain Payment Card Industry Payment Application Data Security Standards (PCI PA-DSS) compliance per October 2008 PCI clarifications**
- **Increase speed-to-market for Passport POS features**
 - Segregate Passport POS from forecourt, network and payment, eliminating PA-DSS considerations on the POS side
- **Insure system flexibility to continue to provide key features and technologies**
 - Software downloads
 - Remote diagnostics and fixes
 - Remote management
 - Connectivity to numerous third party partner programs
 - Future technologies

A new way to manage your world.

Passport



Changes to Current Configuration

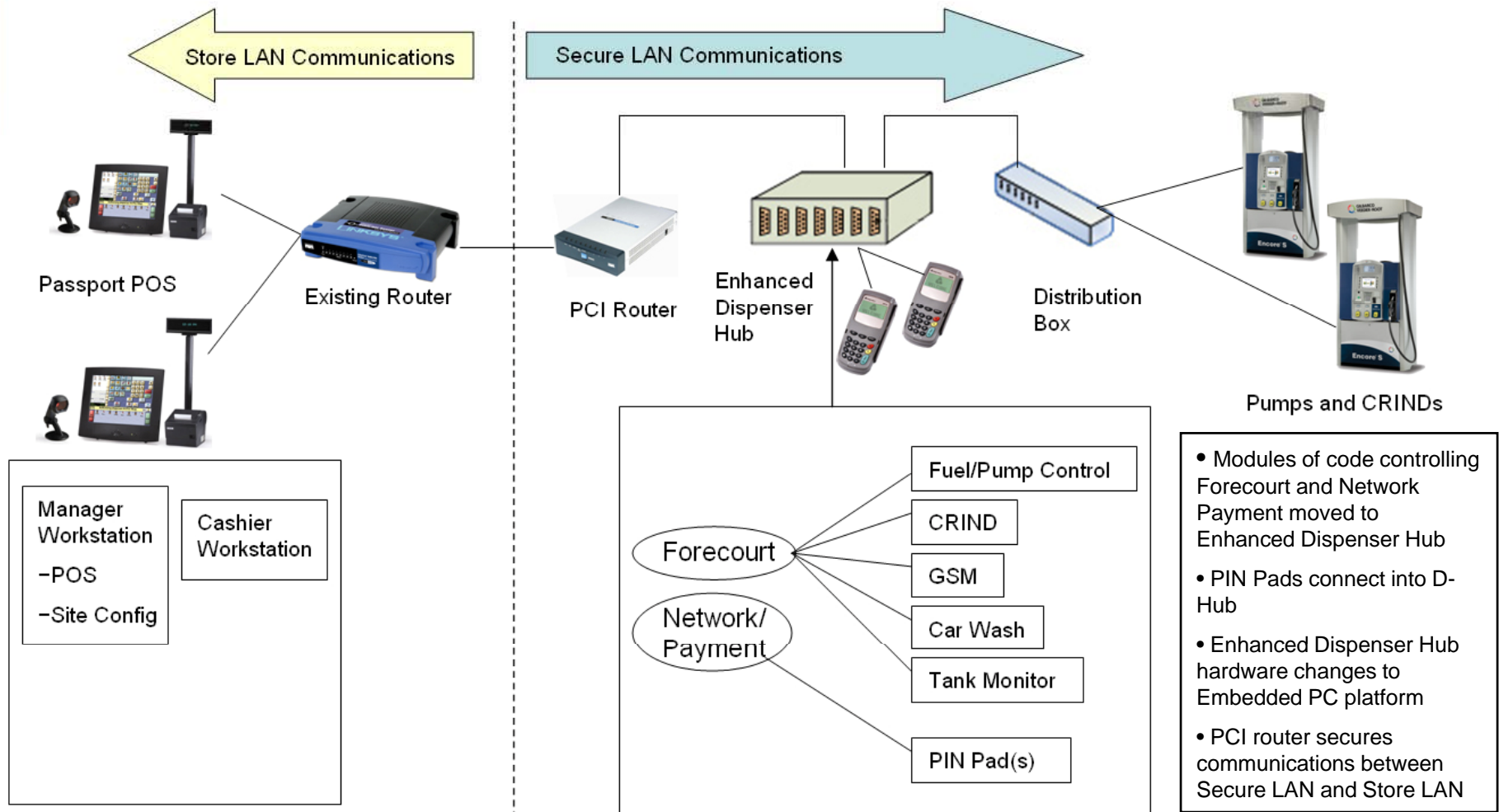


A new way to manage your world.

Passport



Enhanced Passport Configuration



A new way to manage your world.

Passport

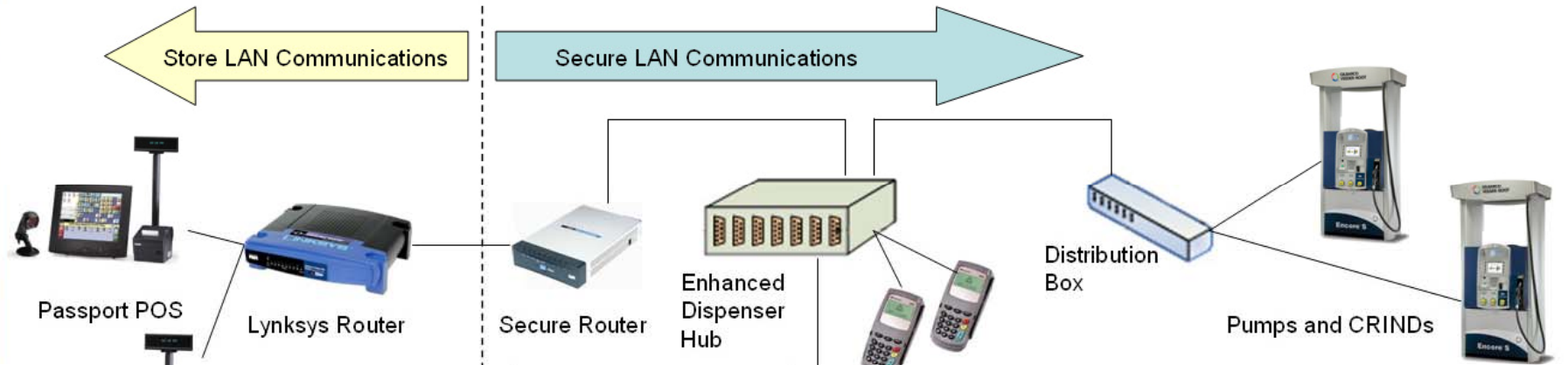


Passport PA-DSS Upgrade Programs Summary

Passport Invoiced ex-Gilbarco	Site Upgrade Required for PA-DSS	Gilbarco Upgrade Program October 2009 – July 2010
October 1, 2008 – May, 2009 –Current Dispenser Hub –Current software	– Upgrade to Dispenser Hub – Upgrade software – Add PCI router	– Gilbarco will provide Enhanced Dispenser Hub, PCI router, software version at no charge (includes systems in Distributor inventory) - Fixed-program on-site labor *
June, 2009 – October, 2009 –Enhanced Dispenser Hub hardware replaces Current Dispenser Hub hardware in production Passport systems June, 2009 –Current software	– Upgrade software – Add PCI router	– Gilbarco will provide PCI router, software version at no charge (includes systems in Distributor inventory). - Fixed-program on-site labor *
October, 2009 –Enhanced Dispenser Hub –2009 PA-DSS software release • Amoco/BP, Chevron, Concord (Generic, Sunoco, Valero), ExxonMobil, NBS (Generic, CENEX, Shell –PA-DSS software for balance of networks released by early 2010	PA-DSS compliant as shipped	No upgrade required

- Gilbarco will contract with Distributor/ASC to provide fixed-program on-site labor for installed systems invoiced by Gilbarco October 1, 2008 – October, 2009 (PA-DSS software release)

The Ins and Outs of PCI



POS

- POS must be PA-DSS certified by July, 2010
- Major Networks requiring upgrade to PA-DSS certified POS (dates vary)

PIN Pads

- All POS systems installed 1/1/08 or later must have TDES-capable PIN Pad
- All sites must have PIN Pad using TDES by July, 2010

EPP

- All CRINDs shipped 1/1/09 or later must have EPP capable of TDES (will work in both TDES and backward-compatible SDES mode)
- All CRINDs accepting Debit must be upgraded to EPP with TDES by July, 2010

Advanced GSM

- Gilbarco sites installed 1/1/09 or later using Debit with **Single DES** at the CRIND must have both EPP and Advanced GSM capable of both SDES and TDES
- TDES sites may use Advanced GSM, but GSM is not required where POS supports elimination of GSM
- GSM may only be eliminated when POS supports it and all CRINDs on-site are taking TDES
- From October, 2009 forward, Passport PA-DSS software eliminates need for Advanced GSM in TDES sites, SDES must still have Advanced GSM

A new way to manage your world.

Passport