

# The New Standard for Back-Office Software

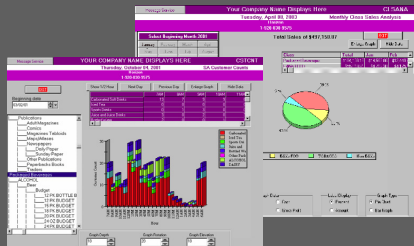
## HORIZON

by Convenience Store Automation, Inc.

Horizon is a Real-Time Interface that guarantees accurate sales and inventory information with the click of a button.

Horizon allows you to start with the basic foundation of modules that best suit your needs. As your business grows and requires additional automation, you will be thankful for the seamless integration of data that flows through every one of the modules available.

With Horizon you now have the opportunity to experience the truly "paperless" environment! Many of the tools you will use for managing your business are graphically displayed throughout all of Horizon's modules.



Easy to use Hand-Held Scanning technology is used at the store level when receiving inventory. Through up-to-the-minute, seamless communication between the hand-held scanner and Horizon, any changes in the cost of an item are immediately recognized. If the retail price of an item is predicted on percentage mark-up over cost or a percentage of gross profit margin (GPM), Horizon automatically alerts the operator of the cost increase and the resulting recommended new retail price of the item. Horizon will easily update the Point-of-Sale, at the site with the new pricing.

In every site that has automated using Horizon, every operator has seen a minimum of a 3% - 5% increase in store gross profit margins! If your store is among the "average" within the industry, your average monthly store sales are approximately \$75,000. With Horizon returning an additional 4% of gross profits, this equates to \$36,000 per year of increased profits alone! Now combine those profits with the virtual elimination of employee and vendor theft and the reduction in labor for data entry, and you can quickly see just a few of the many true benefits of automation! Looking at this from the opposite perspective, how much money are you losing by not automating?

- Real-Time Inventory Control
- Fully Integrated Automation
- RF Scanning Technology
- 1 Year of Software Maintenance & Upgrades
- 1 Year of Telephone Support
- 90-Day Software Money Back Guarantee



Ask your PSI Sales Representative  
About HORIZON Today!

Providing SOLUTIONS for Fuel Handling & Service Station Equipment Throughout Texas.

## The Horizon Modules



**Inventory** - Detailed audit trails can be done by department, vendor, package or item number. Hand-held technology during receiving automatically updates your inventory!



**Scheduler** - Automatically completes employee schedules, combining employee desired shifts with default store priorities. Also tracks approved vacation and time-off.



**Time & Attendance** - Automatically tracks employees scheduled and unscheduled time, including: vacation days, personal days, sick time, lunch and breaks.



**Customer Rewards** - Recognize your valuable and frequent customers through customer loyalty rewards based on purchase history.



**P.O.S. Manager** - Exclusive Real-Time Interface includes daily reports, allowing for full income and sales reporting.



**Fuel Manager** - Another Real-Time Interface with your automatic tank gauging systems. Provides fuel inventory control, reconciliation and compliance reporting.



**Manager Events** - Our system "Watch-Dog" program. A reminder system for your manager and employees that automatically alerts when an event occurs.



**Sales Analysis** - Sales ranking by Vendor Cost, gross profit, quantities sold or gross sales. Track promotions and customer transactions. Graphical display capabilities including 3-D bar graphs.



**Accounts Payable** - Control payments by Vendor or selected invoices. Simplifies check processing by automatically interfacing invoice dates with specific items.



**Accounts Receivable** - Account transactions post directly from the POS to A/R, eliminating duplicate data entry. Also includes automatic calculation and applying of finance charges.



**Payroll** - Fully functional payroll system automatically tracks employee data to seamlessly prepare required reports. You can also import employee pictures for custom name tags!



**General Ledger** - All modules are integrated so all information is transmitted into the G/L on a Real-Time basis, allowing for financial reports immediately upon month-end!



**Fleet CSA** - Provides your house account customers with credit cards to be used both at the POS and at dispenser card readers. Even consolidates transactions into one statement!

**Custom Modules Available!**